

DESCRIPTION

Macsim® QuikFix Polyester Resin is a two component chemical anchoring injection system. A formulation derived from polyester resin with high bond strength, developed principally to anchor threaded rods into concrete, and for masonry and hollow wall installations. Used widely for medium loads in both horizontal and vertical applications.

FEATURES

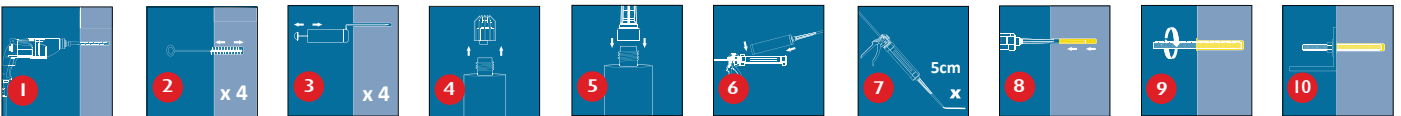
- Suitable for medium loads for non-critical applications.
- Fast working times for early loading in time sensitive applications.
- No styrene allows for use indoors and in enclosed spaces.
- Use in damp and wet environments and fixing holes
- Extremely versatile in masonry, hollow, aerated concrete.
- Crack and gap filling repairs in concrete vertical or horizontal
- 10:1 resin available in a variety of cartridge types.

RECOMMENDED USE

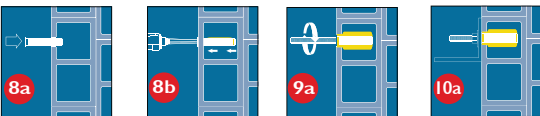
Design to anchor threaded rods and rebar in concrete and also the advantage of european approval for use in masonry blocks according to the etag 029.

APPLICATION INSTRUCTIONS

Solid substrates



Hollow wall



APPROVALS/ CERTIFICATIONS/ TESTING

- 15/0008 - ETA Option 7 Non-Cracked Concrete. Includes flooded holes.
- 11/0032 - ETA ETAG 029 Hollow Wall / Masonry Installations.
- CE Certified 1404-CPR-2586 - ZAG, Solvenia.
- ITB Approval (Poland) 0978/W
- LEED tested 2009 EQ c4.1 SCAQMD rule 1168 (2005.)
- VOC A+ Rating (Volatile Organic Content)



PROPERTIES

| | |
|----------------------|-------------------------------------|
| Colour | Grey |
| Density | 1.71 kg/m ³ |
| Compressive Strength | 43.5 N/mm ² (EN ISO 604) |

WORKING & HARDENING TIMES

| Base Material Temperature | -10°C | -5°C | 5°C | 15°C | 25°C | 35°C |
|----------------------------------|-------|------|-----|------|------|------|
| Gel Working Time (minutes) | 50 | 40 | 20 | 9 | 5 | 3 |
| Curing Time Dry Concrete (Mins.) | 240 | 180 | 90 | 60 | 30 | 20 |
| Curing Time Wet Concrete (Mins.) | x 2 | x 2 | x 2 | x 2 | x 2 | x 2 |

TYPICAL TENSILE PERFORMANCE - STANDARD EMBEDMENT DEPTH

| Concrete, C20/25, 5.8 Grade Studding | | | | | | |
|--------------------------------------|-----------------------------|---------------------------|------------------------------|--------------|---------------|---------------|
| Size | Recommended Load | | Spacing (S _{cr,N}) | Drill Hole Ø | Fixing Hole Ø | Setting Depth |
| | Tension (N _{rec}) | Shear (V _{rec}) | (mm) | (mm) | (mm) | (mm) |
| M8 | 9.07 | 5.14 | 160 | 10 | 9 | 80 |
| M10 | 8.70 | 8.57 | 200 | 12 | 12 | 90 |
| M12 | 12.00 | 12.00 | 240 | 14 | 14 | 110 |
| M16 | 17.25 | 22.29 | 320 | 18 | 18 | 125 |
| M20 | 27.23 | 34.86 | 400 | 24 | 22 | 170 |
| M24 | 34.03 | 50.29 | 450 | 28 | 26 | 210 |
| M30 | 47.12 | 81.43 | 520 | 35 | 32 | 280 |

STORAGE & SHELF LIFE

This product should be stored between +5°C & +25°C.
 Avoid Direct Sunlight
 The Shelf life of the product is 18 months from the manufacture date.

HEALTH & SAFETY

First Aid: SWALLOWED: Wash mouth out with water. Consult a doctor. SKIN: Wash immediately with plenty of soap and water. Remove all contaminated clothes and footwear immediately unless stuck to skin. Consult a doctor. EYES: Bathe the eye with running water for 15 minutes. Consult a doctor. INHALED: Move to fresh air in case of accidental inhalation of vapours. Consult a doctor.

Contact a doctor or poisons information centre (Phone Australia 13 11 26; Phone New Zealand 0800 764 766)

Safety: Keep out of reach of children. Read label before use. Use only outdoors or in a well-ventilated area. For further health and safety information, consult the latest safety data sheet.

PACKAGING

Available in 300ml & 410ml cartridge

Product Details: 71PC300 (300ml) 71PC410 (410ml)

DISCLAIMER

The information in this Technical Data Sheet (TDS) is based on our present knowledge to the date of the publication. However, this shall not constitute a guarantee for any specific product features and shall not establish a legally valid contractual relationship. It is only a guide for safe handling, use, storage, transporting and disposal of the product.

Head Office: Macsim® Fastenings Pty Ltd
 10 Drive, Eastern Creek NSW 2766 Australia
 ABN: 30 000 056 119
 Phone: (02) 9881 2400 | Fax: (02) 9881 2444
 TOLL FREE: 1800 022 019

Macsim Australia owns all copyright in these product instructions. All rights reserved. For more information go to www.macsim.com.au